



Kent's Conservation Landscape Tool

App Read Me (User Guide)

November 2020

Please direct all queries to:
alana.skilbeck@kentwildlife.org.uk
or alison.riggs@kentwildlife.org.uk



Head Office: Kent Wildlife Trust, Tyland Barn, Sandling, Maidstone, Kent ME14 3BD

Tel: 01622 662012



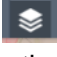
info@kentwildlife.org.uk | kentwildlifetrust.org.uk

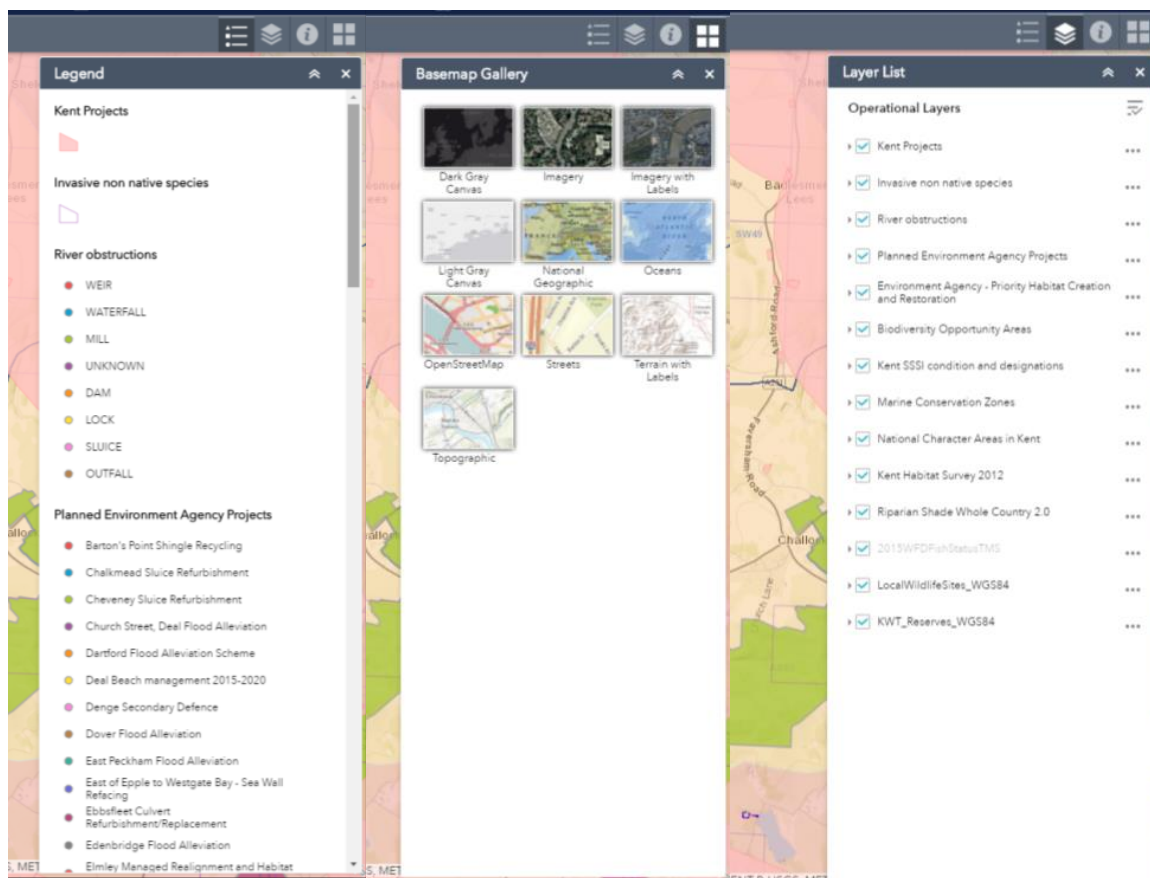
Registered Charity No. 239992. A company limited in England and Wales by guarantee 633098. Registered at the above address.





Basic operations:

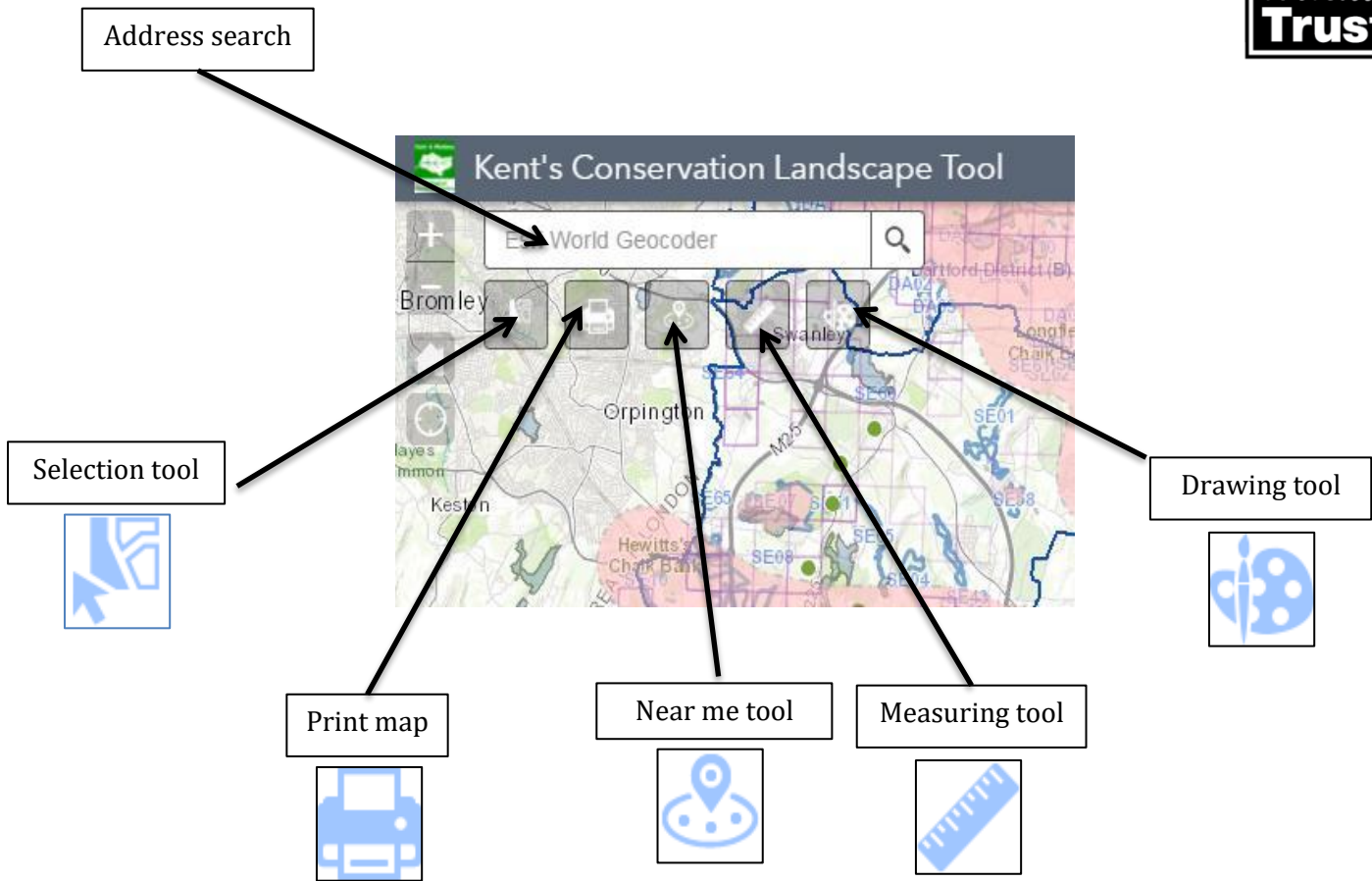
- A map legend can be accessed by clicking the  button in the top right corner
- The basemap can be changed using the  button
- Layers can be turned off and on using the  button to open the list of operational layers. Some layers may appear to be greyed out; this indicates the map scale is outside the visible scale parameters set for that layer i.e. some of the landscape scale features are only visible at large map extents, while some with small features are only visible at smaller map extents.
- Clicking on the map will bring up a pop-up box with the attributes of all of the features at the point of the map that was clicked over.
- All layers administered by KMBRC are fully queryable, some of those from third parties are limited to viewing only so will not be responsive to clicking over.



Head Office: Kent Wildlife Trust, Tyland Barn, Sandling, Maidstone, Kent ME14 3BD
Tel: 01622 662012
info@kentwildlife.org.uk | kentwildlifetrust.org.uk



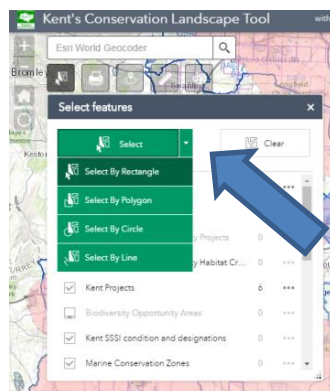
Registered Charity No. 239992. A company limited in England and Wales by guarantee 633098. Registered at the above address.



Address search – searches for place names and postcodes



Selection tool – use this tool to investigate the mapped features around your project area. Using the dropdown menu you can draw rectangles, circles, polygons or lines to define where you want to search.



Head Office: Kent Wildlife Trust, Tyland Barn, Sandling, Maidstone, Kent ME14 3BD

Tel: 01622 662012

info@kentwildlife.org.uk | kentwildlifetrust.org.uk

Registered Charity No. 239992. A company limited in England and Wales by guarantee 633098. Registered at the above address.



Kent's Conservation Landscape Tool


App Read Me (User Guide)

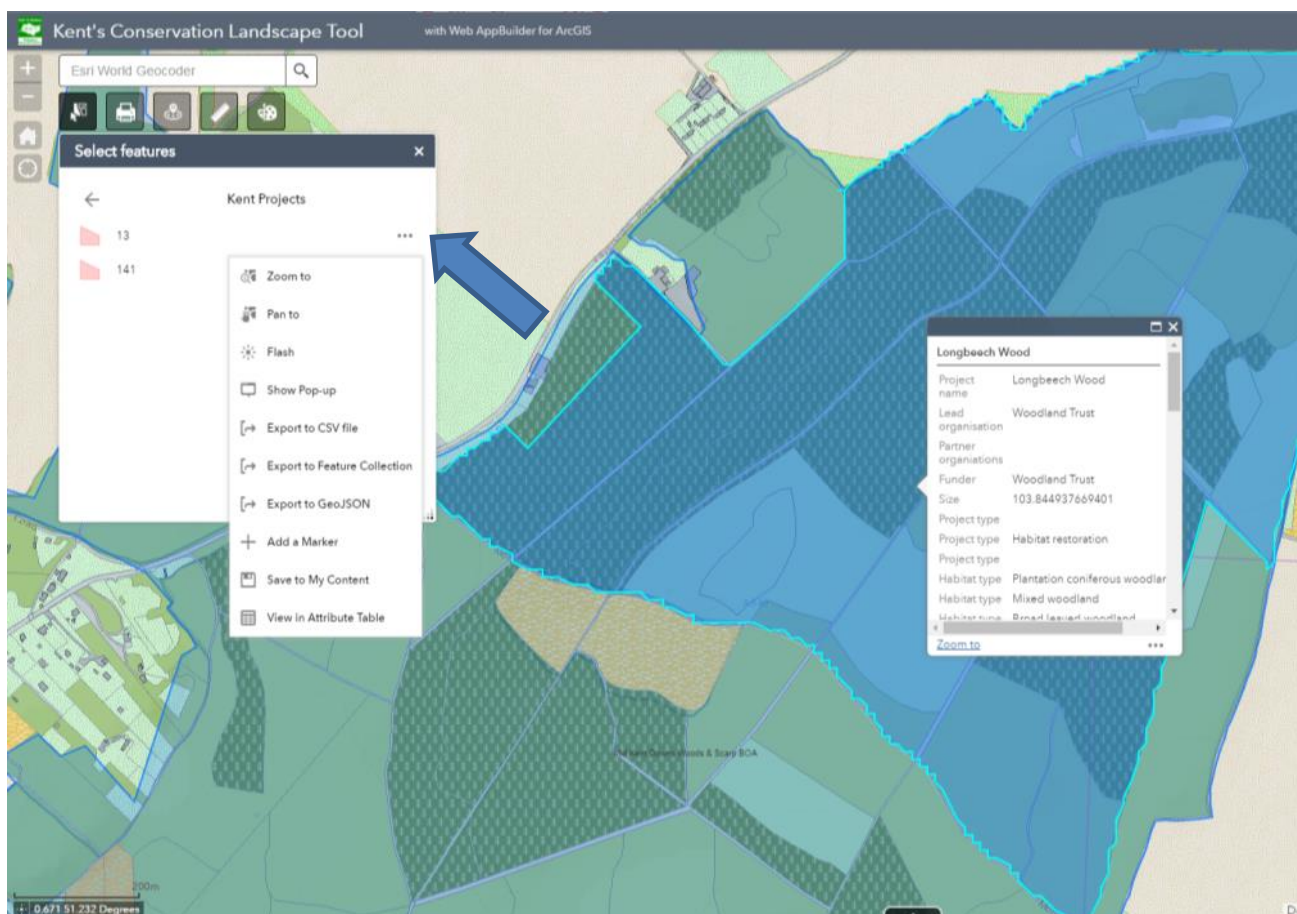
November 2020



All searchable features intersecting your shape will be highlighted. You can click through the layer name to see the details of the selected features.



By clicking on the  button to the right you can access tools for panning to, zooming to and exporting the selected features to CSV (for import into a spread sheet).



The attribute table for each of the queryable layers is accessible at the bottom of the map window by clicking on the black button with an arrow in it.



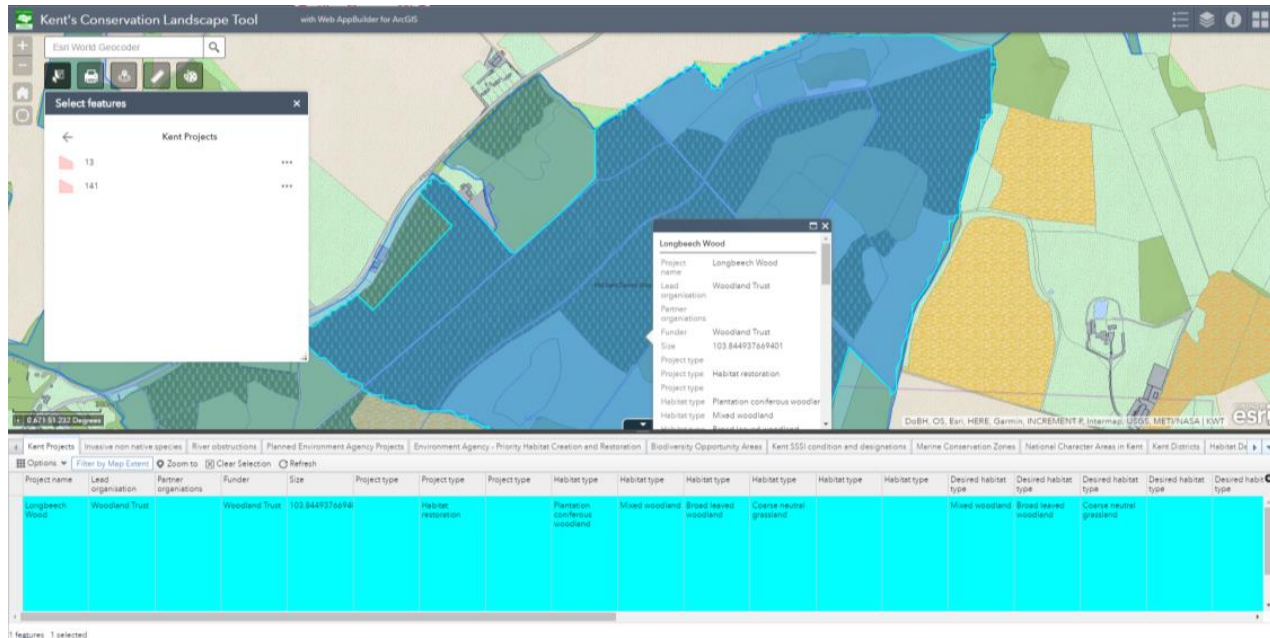
Head Office: Kent Wildlife Trust, Tyland Barn, Sandling, Maidstone, Kent ME14 3BD

Tel: 01622 662012

info@kentwildlife.org.uk | kentwildlifetrust.org.uk

Registered Charity No. 239992. A company limited in England and Wales by guarantee 633098. Registered at the above address.





Print map – use this to print your map window to an image file i.e. jpg or to a pdf. The size of print, quality and map elements included can be modified in the dialogue box.



Near me tool – Use this tool to drop a pin on the map and review all of the features present between 1 and 5km around it. The search distance can be modified using the slide bar in the tool dialogue box.

The dialogue box displays how many features from each layer are intersecting the buffer, and as with the select tool, the layer name can be clicked on to explore the details of the features.

The attribute table can be toggled to show only the features in the map extent (though not necessarily within the buffer); these can then be selected and exported.



Measuring tool – Use this tool to calculate distances between points and the areas of polygons drawn with this tool. The units are set to kilometers and hectares, though this can be toggled in the dialogue box.



Drawing tool – Use this tool if you want to annotate your map prior to printing. It has tools for map markers, text, circles, lines, rectangles etc. The appearance of the drawn graphics can be modified in the dialogue box when a tool is selected



Head Office: Kent Wildlife Trust, Tyland Barn, Sandling, Maidstone, Kent ME14 3BD

Tel: 01622 662012

info@kentwildlife.org.uk | kentwildlifetrust.org.uk



Registered Charity No. 239992. A company limited in England and Wales by guarantee 633098. Registered at the above address.